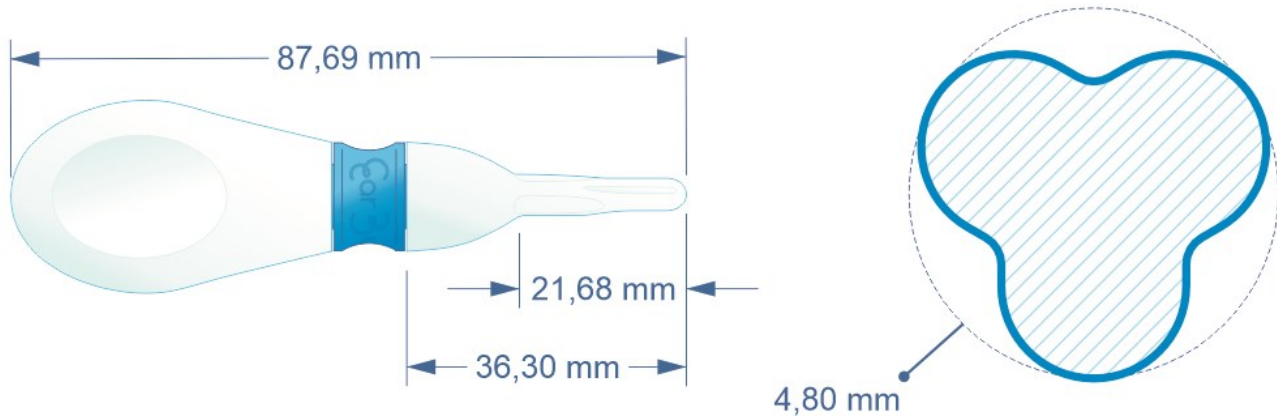
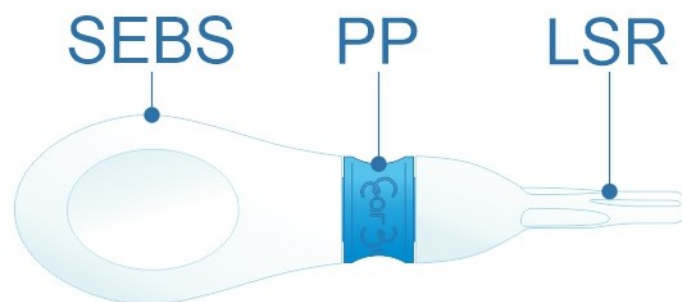


A. USER'S MANUAL

1. DESCRIPTION



1.1 The product, which is reusable and recyclable, consists of three parts: the platinum silicone tip, the colored polypropylene (PP) central connector, and the SEBS elastomer pump.



1.2 The silicone tip presents a thinner, three-lobed section that is to be inserted inside the ear and a bell-shaped base that prevents going too deep with the instrument inside the ear cavity.

1.3 The dimensions of the tip were designed based on the average size of a human ear in order to avoid, as much as possible, any potential contact with the eardrum. Refer to Sections 3 and 4 of this manual for safe use.

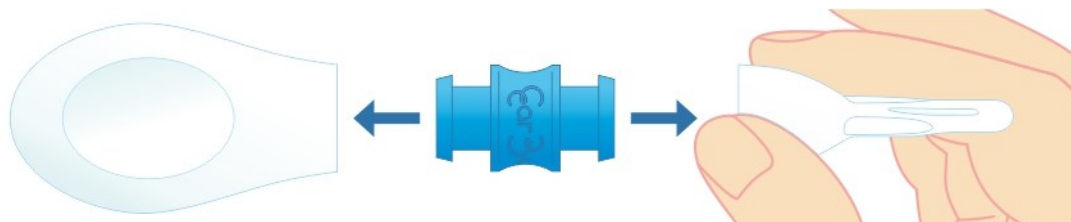
1.4 The central Polypropylene connector was manufactured in four different colors (Blue, Yellow, Red, and Green). Its main function is to connect the tip with the inflation pump, as well as to offer a color choice at purchase and to identify one's device by color.

1.5 The elastomer pump (SEBS) is used to inflate the tip. It should be held between the fingers and squeezed gently to allow the tip to expand inside the ear canal. It can be separated from the polypropylene connector by carefully pulling it apart.

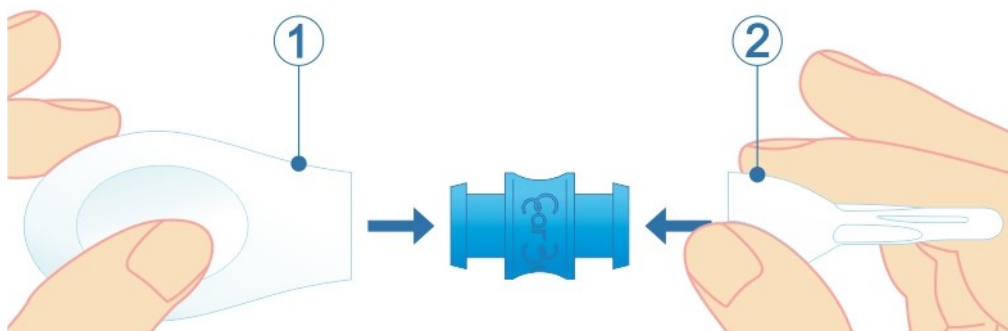
1.6 The three components can be separated easily because they are held together only by pressure. This is to facilitate replacement of individual parts and, also, at the end of their service life for proper disposal and recycling.

2. SET UP

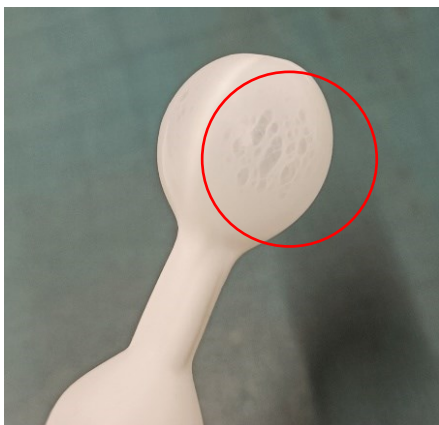
2.1 The three parts are already assembled at the time of purchase and can be separated and reassembled easily without the use of tools or glues. Disassembly can be done by carefully pulling the pieces apart (especially the tip, which must always be separated by pulling it from the bell-shaped base and not from the inflatable trilobal part), while assembly is carried out by pressing the pieces together.



2.2 In case of reassembly, it is recommended to always proceed by first reassembling the elastomer bulb on the polypropylene connector and finally adding the tip, always holding it by the bell-shaped base and holding the device by the polypropylene connector and not by the bulb. This measure avoids creating a depression inside the device which would compromise its correct functioning.



3. USE



Before each use, clean the tip with soap and water and dry it gently, checking that it is correctly inflated and checking that the tip does not have any stretch marks on the inflated surface.

IMPORTANT: Do not use the silicone tip at the appearance of marks or stretch marks on the inflatable surface. These marks anticipate its imminent rupture, which may occur by tearing or bursting.



TIP: To facilitate the insertion of the silicone tip inside the ear, it is recommended to pull the ear back slightly, holding it by the helix or lobe.

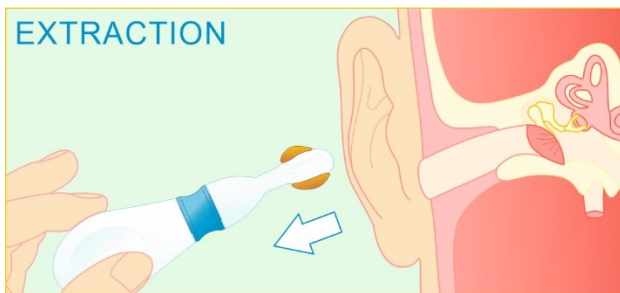


3.1 Carefully insert the silicone tip inside the ear canal, holding the device between two fingers positioned in the two recesses on the pump.

3.2 **IMPORTANT:** In case of discomfort or pain during the insertion, cancel the operation and consult an ENT specialist to understand the extent of the problem, which could be of a physiological nature or due to an infection.



3.3 Once the silicone tip has been inserted inside the ear canal, inflate it enough to make it adhere to the walls of the ear canal by squeezing the pump between your fingers. There is no need for too strong inflation because it would only lead to discomfort due to the vacuum effect when removing the device from the ear.



3.4 Still keeping the tip inflated, remove the device from inside the ear. In case of discomfort or pain at the time of extraction, slightly reduce the pressure inside the silicone tip.

3.5 Before repeating the operation, if necessary, clean and dry the tip carefully.

4. CLEANING AND MAINTENANCE

IMPORTANT: Do not use solvents, disinfectants, alcoholic bases, or acids for cleaning. The use of emollient oils could compromise the molecular structure of the tip. Do not put in washing machines or dishwashers. Do not use abrasives or any type of product that could compromise the life of the device.

- 4.1 Clean the device only with soap and water and dry it gently before and after each use.
- 4.2 Always store the device inside its case and in any case away from sunlight or heat sources.
- 4.3 Whenever you disassemble the device, do not reassemble it wet to avoid the formation of mold inside it.
- 4.4 Over time, the tip of the device could physiologically deflate due to a loss of pressure inside the device or due to changes in external pressure (e.g. sea / mountain). This can be re-established by detaching and reassembling the tip on the device (see: 1.2) or by slightly lifting a flap of the bell-shaped base of the tip to allow new air to enter inside the device and restore the correct pressure.

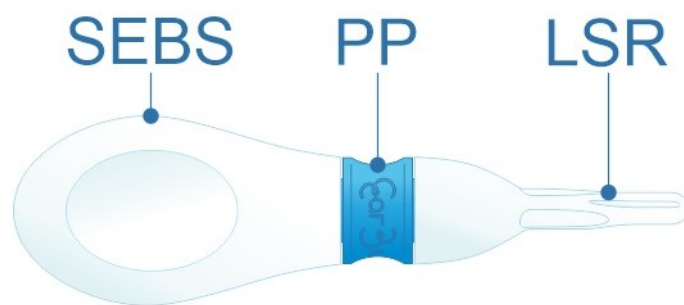
5. SPECIAL WARNINGS

IMPORTANT: Due to the material, size and thickness of the tip, it should not be overinflated, pulled or subjected to excessive mechanical, thermal or chemical stresses. This is to avoid compromising the life and proper functioning of the device.

- 6.1 Keep out of the reach of children.
- 6.2 Do not use on infants. Do not use on children under 9 years of age.
- 6.3 Use only and exclusively for cleaning the ear canal.
- 6.4 Avoid improper use of the device.
- 6.5 Use only after medical advice in the event of ear problems or diseases.
- 6.6 Particular care is recommended when using it by elderly and/or particularly sensitive persons.
- 6.7 Do not use the silicone tip when marks or stretch marks appear on the inflatable surface. These marks anticipate an imminent rupture that may occur through tearing or bursting.
- 6.8 The tip must be replaced when the signs referred to in 3.7 appear or in the event of significant deformations or other problems.

6. PRODUCT DISPOSAL

IMPORTANT: Always refer to the disposal rules of your municipality of residence.



- 6.1 The EarBuddy device can be easily disassembled into three parts: the platinized silicone (LSR) tip, the colored polypropylene (PP) central connector and the elastomeric SEBS inflation pump. These three components can be recycled if taken to the appropriate collection points in your community.
- 6.2 The case is made of polypropylene (PP), is recyclable and should be disposed of in the plastic container.
- 6.3 If your municipality does not provide for the recycling of silicone and/or elastomer SEBS parts, it is recommended that these components be disposed of in the unsorted waste container.

7. OWNER

MioColibri S.r.l.

c/o Incubatore certificato Vega, Via delle Industrie 15 – 30175 Venezia (VE) – ITALIA

info@miocolibri.com - info@earbuddy.life - www.earbuddy.life